

A painting of a small boat with two people on a body of water. The water is dark and reflective, showing the boat and the birds. The sky is filled with many birds in flight, some in silhouette and others with more detail. The overall color palette is dominated by blues, greys, and whites, with some darker tones in the water and birds. The style is impressionistic, with visible brushstrokes and a sense of movement.

NICK ARCHER

Transience





*Disintergration*  
oil and gold paint on black sandpaper 140 × 120 cm

# NICK ARCHER

## Transience

16 November 2023 – 12 January 2024

### LONG & RYLE

4 John Islip Street, London SW1P 4PX

t: +44 (0) 20 7834 1434

e: [gallery@long-and-ryle.com](mailto:gallery@long-and-ryle.com)

Tuesday – Friday 10 – 5:30 | Saturday 11 – 2





## NICK ARCHER

Nick Archer's new series of paintings draw reference from a combination of sources such as vintage postcards, on-line media images and photographs he has taken himself. The unifying element is the process of painting which evokes the passage of time; a sense of change or 'Transience'.

When working on canvas these images of people at play or work are placed in environments of awe-inspiring landscape; sometimes hostile but always beautiful. The simple image of people having a snowball fight suddenly becomes more ambiguous and mysterious when Archer places them in the wild Alpine landscape reminiscent of the snow scenes of the Flemish painter Pieter Bruegel the Elder. The figures who inhabit these landscapes are sometimes so small they appear insignificant, stick-like figures, unaware of the power the landscapes they inhabit.

His paintings from Victorian postcards include portraits of figures in historical dress which show the influence of Velasquez and in turn Francis Bacon and the paintings of cut flowers which are turning colour, the trees and the landscapes have a similar timeless and ethereal quality which hint at change and decay.

Archer's working process is key to understanding and appreciating these paintings. There is a fine balance between abstraction and an evolving image which appears, disappears, and then re-emerges in paint. Archer starts the paintings with an abstract ground of splashed colour. When nearly dry he then starts to weave an image into the passages of paint, but the image can change or disappear and slowly through this process of re-painting, he builds the surface of the paint to create layers which reflect the history and progression of his working process. The paint starts

*What the Snow Brings*

oil on canvas 150 × 180 cm

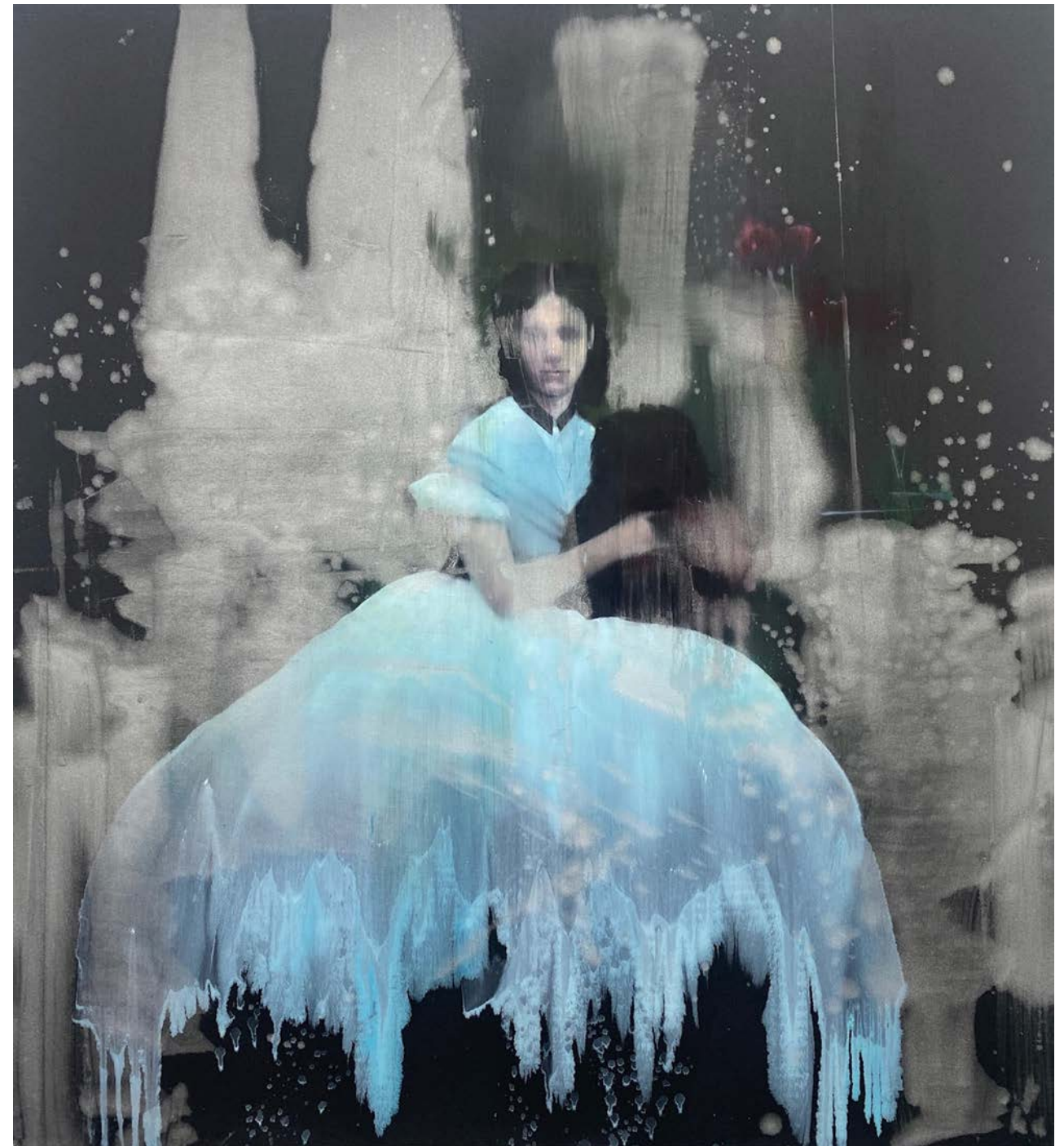


as thin washes of colour but slowly builds to thick impasto with areas of sprayed paint.

Archers' choice of surface is interesting; As well as conventional linen he paints on black sand cloth (an industrial scale sandpaper) which Archer likes to use for the quality the paint creates when it spreads on the surface. Interestingly, when painting on the black sand cloth his usual process is in reverse as he paints the image first and then breaks the image down by pouring paint over the surface in a random manner. The resulting paintings have the feeling of old, partly faded photographs such as those of the nineteenth century photographic pioneer Fox Talbot. The figures become ghostly, the flowers and landscapes partly disappear under the veils of colour, silver and gold and the surfaces sparkle.

Archer clearly enjoys a balance between painting in a realistic manner and the abstract qualities created when pouring the paint and allowing happy accidents to occur (again with a nod to the painter Francis Bacon). His process of working; seems to beautifully reflect the subject matter itself. The paintings have a mystery and a magic created within the layers of paint. Whether in the sublime landscapes, the historical figures from postcards or the flowers, the true subject matter is the passage of time; the fragility of these natural forms and landscapes but also how nature can recycle and rejuvenate itself.

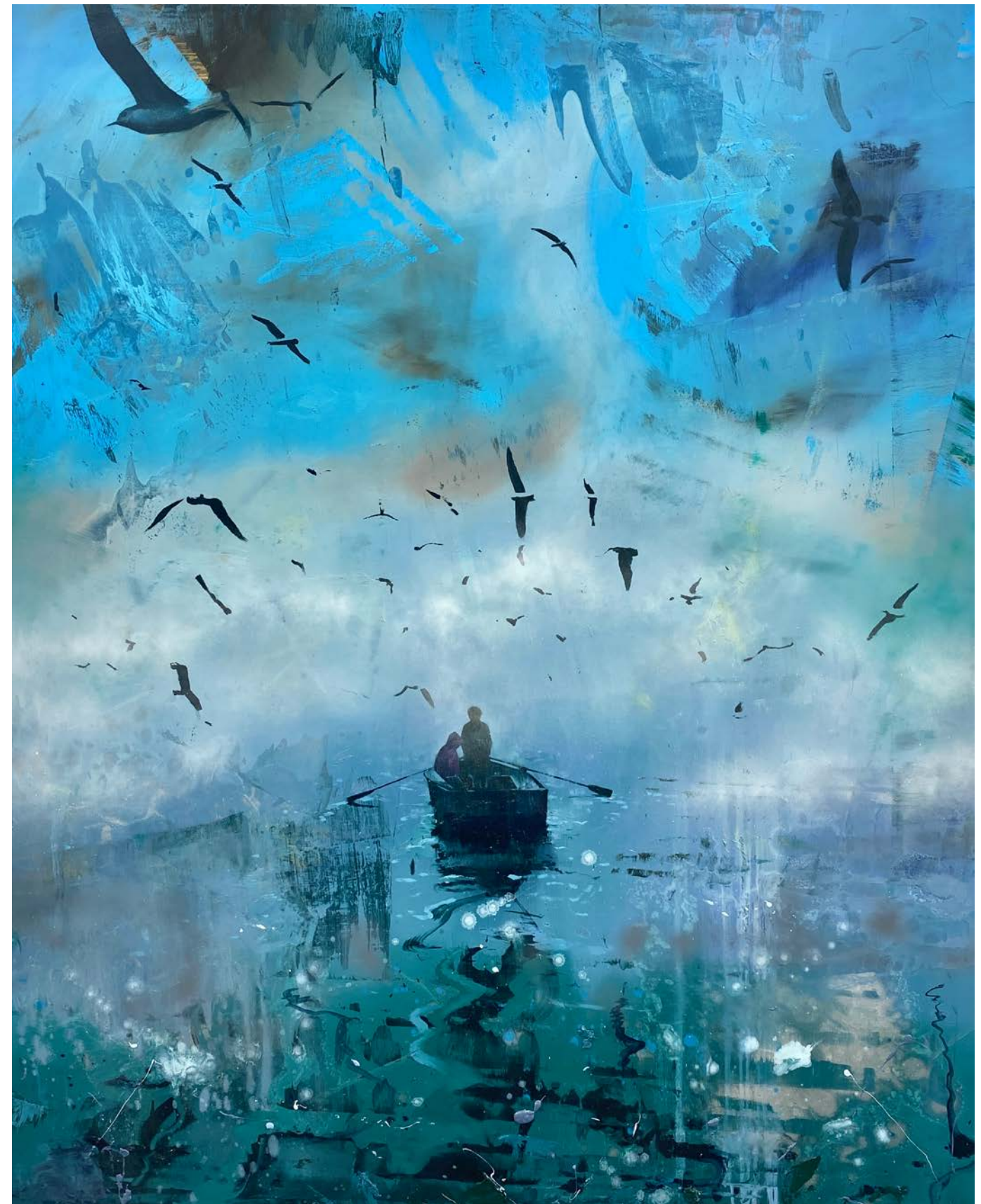
Nick Archer (UK, b. 1963) lives and works in East Sussex, England. He studied at the Royal Academy Schools in London (1996-1999). Winning several awards after leaving the Royal Academy, including 1st prize at the Hunting art prize, commended at the BP Portrait Award and the Figure Painting Award at the Discerning eye. He has exhibited extensively in the UK, Europe and more recently in the USA and China. These include solo exhibitions with Louise Alexander gallery, Porto Cervo, Italy, Long and Ryle, London, Galerie Hug, Paris, a two person show at Gowen Contemporary in Geneva in 2014 and again in 2017 and a solo show with Christine Park gallery in Shanghai, China in 2021. In 2019 he had a solo booth presentation of his paintings at 'Untitled' art fair in San Francisco with New York gallery Christine Park gallery. He has also featured at Dallas Art fair 2019 & 2020, Art Tokyo 2019 and Westbund art fair Shanghai with Christine Park gallery. Museum exhibitions include the National Portrait Gallery in London, the Wandsworth Museum, London, a solo exhibition at the Maison de la Culture in Metz, France in 2012 and a solo show at the Hastings Museum in East Sussex. Nick also curated the exhibition 'Time memory and landscape' which was exhibited at Long and Ryle in London in 2017. His work is in private, corporate, and public collections around the world including the future satellite of the Hermitage Museum, Moscow.



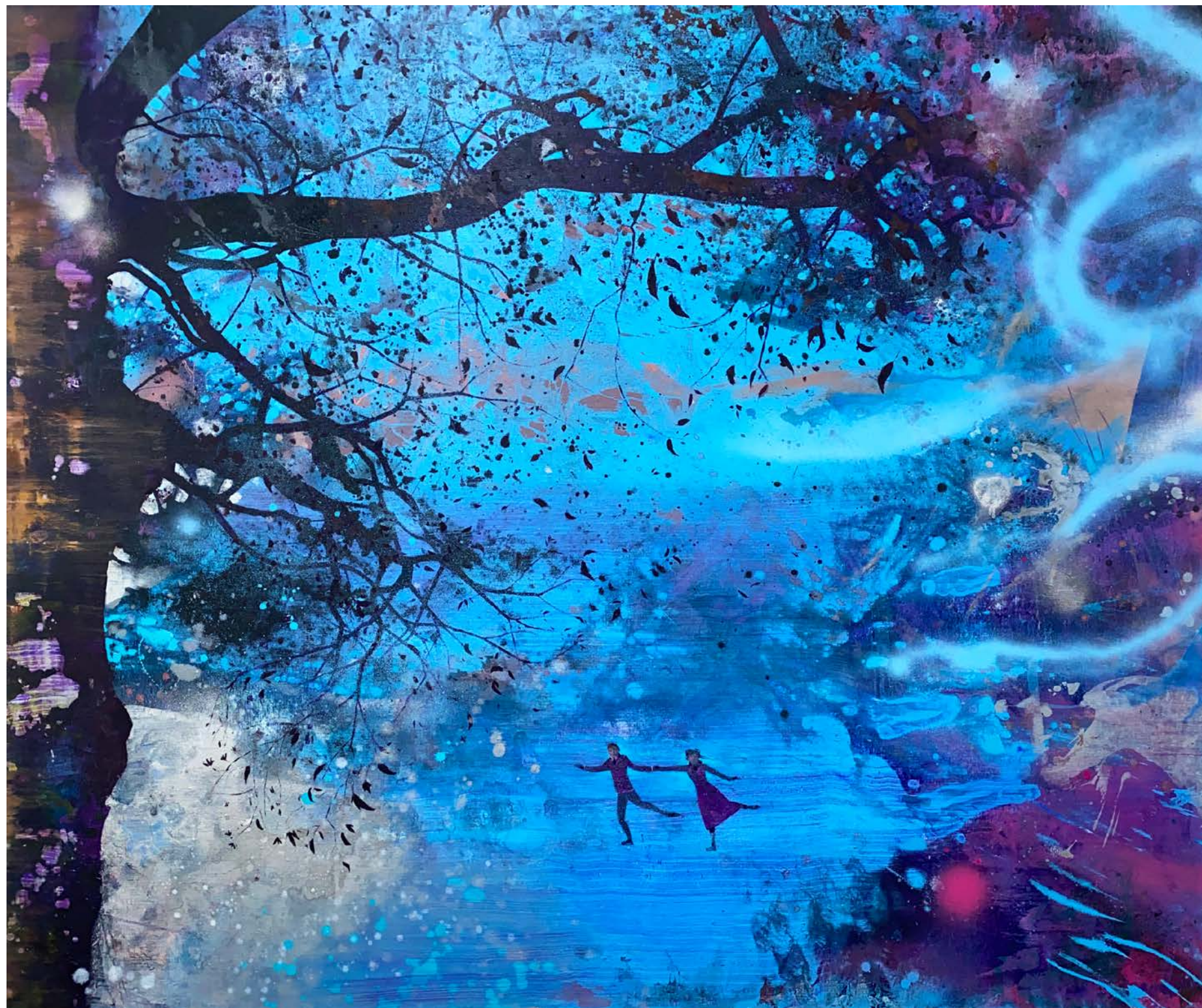
*Blue Dress*  
oil on black sand cloth 140 × 120 cm



*Fishing in Fog*  
oil and spray paint on canvas 160 × 130 cm







*Freeze*  
oil and spray paint on canvas 152 × 183 cm





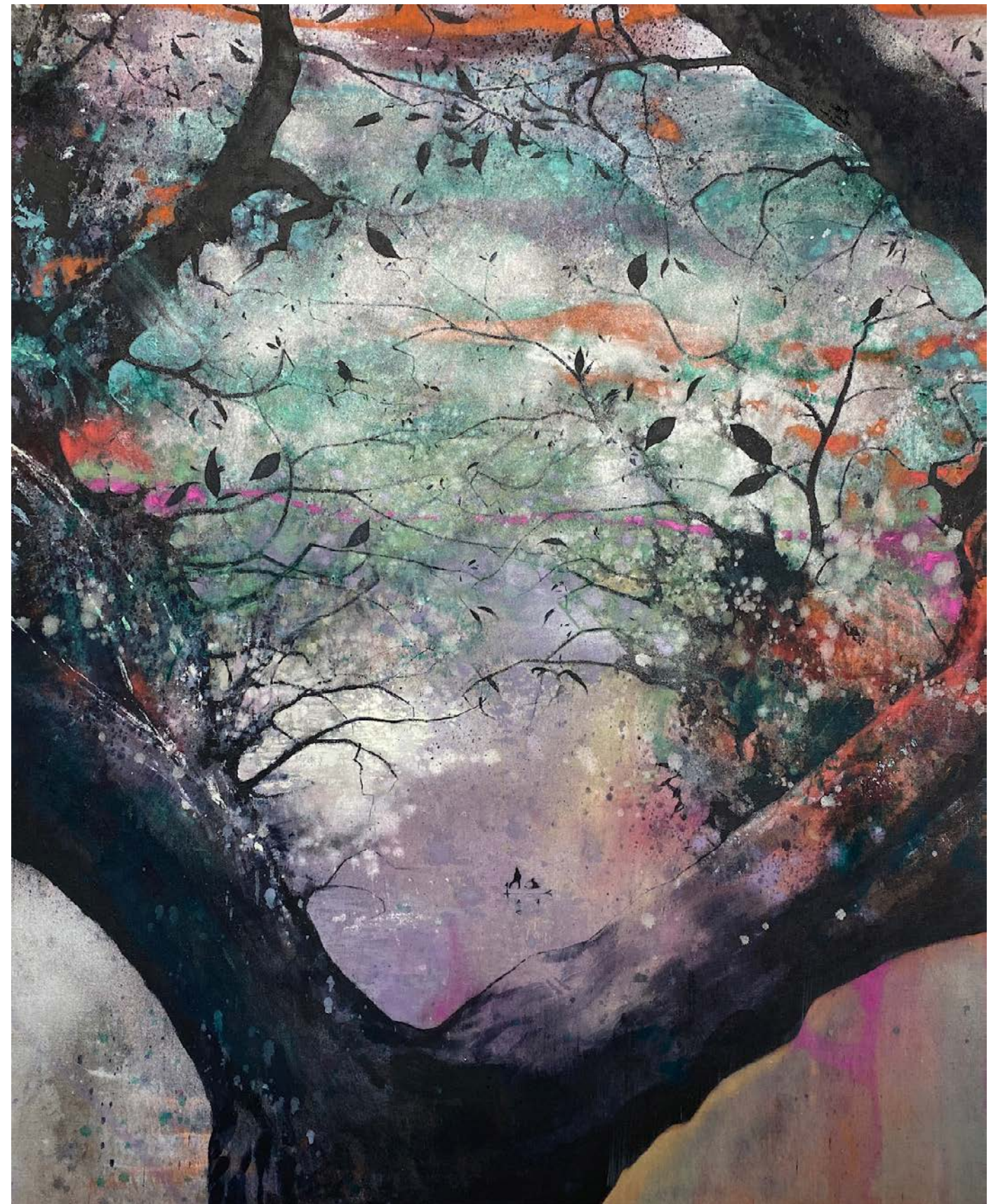
*Pond*  
oil on canvas 77 × 62 cm



*Two Tribes (Snowball Fight)*  
oil on canvas 122 × 97 cm

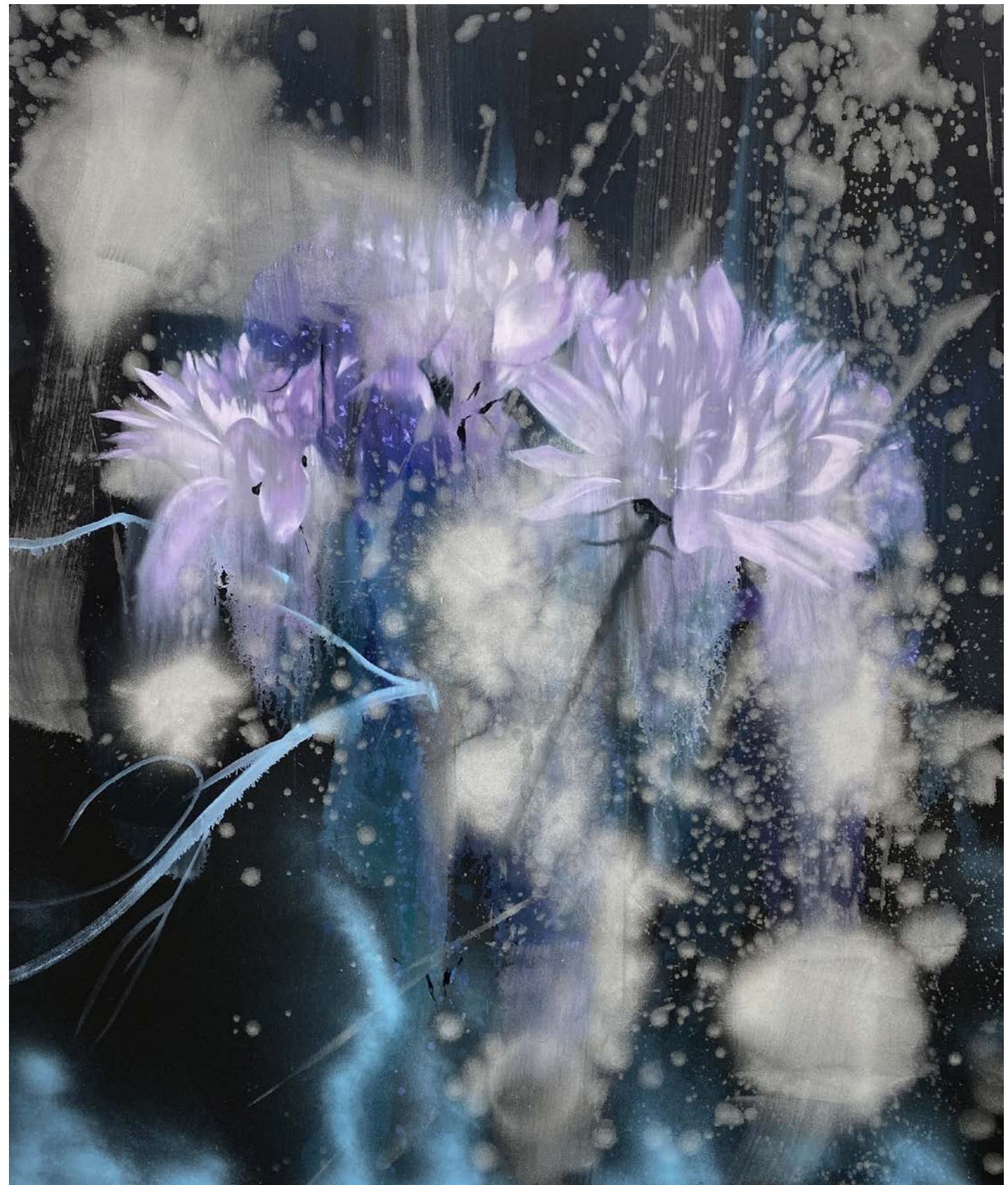


*Boatmen*  
oil and spray paint on raw linen 160 × 130 cm



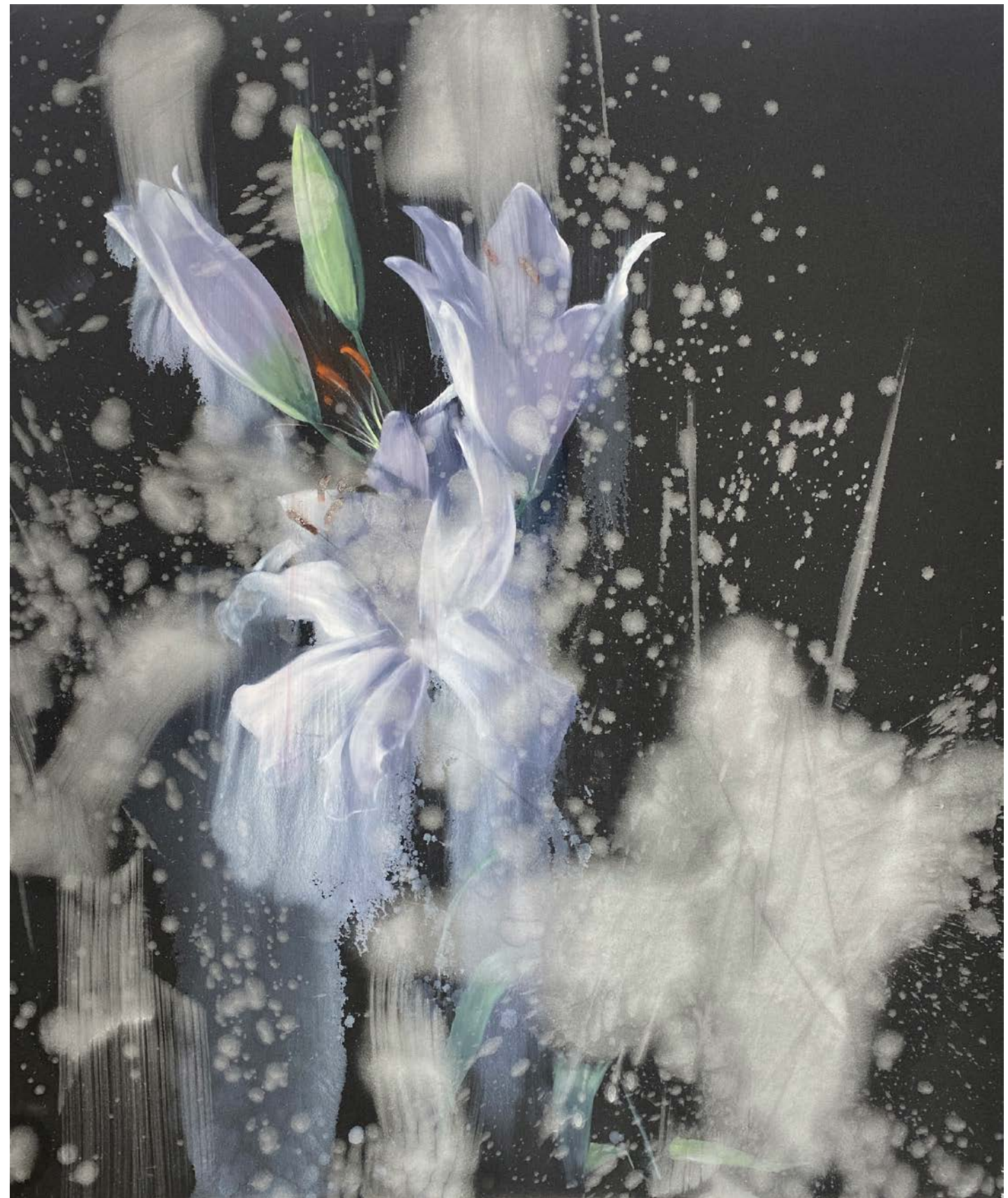


*Untitled No 9*  
oil and spray paint on black sand paper 140 × 120 cm



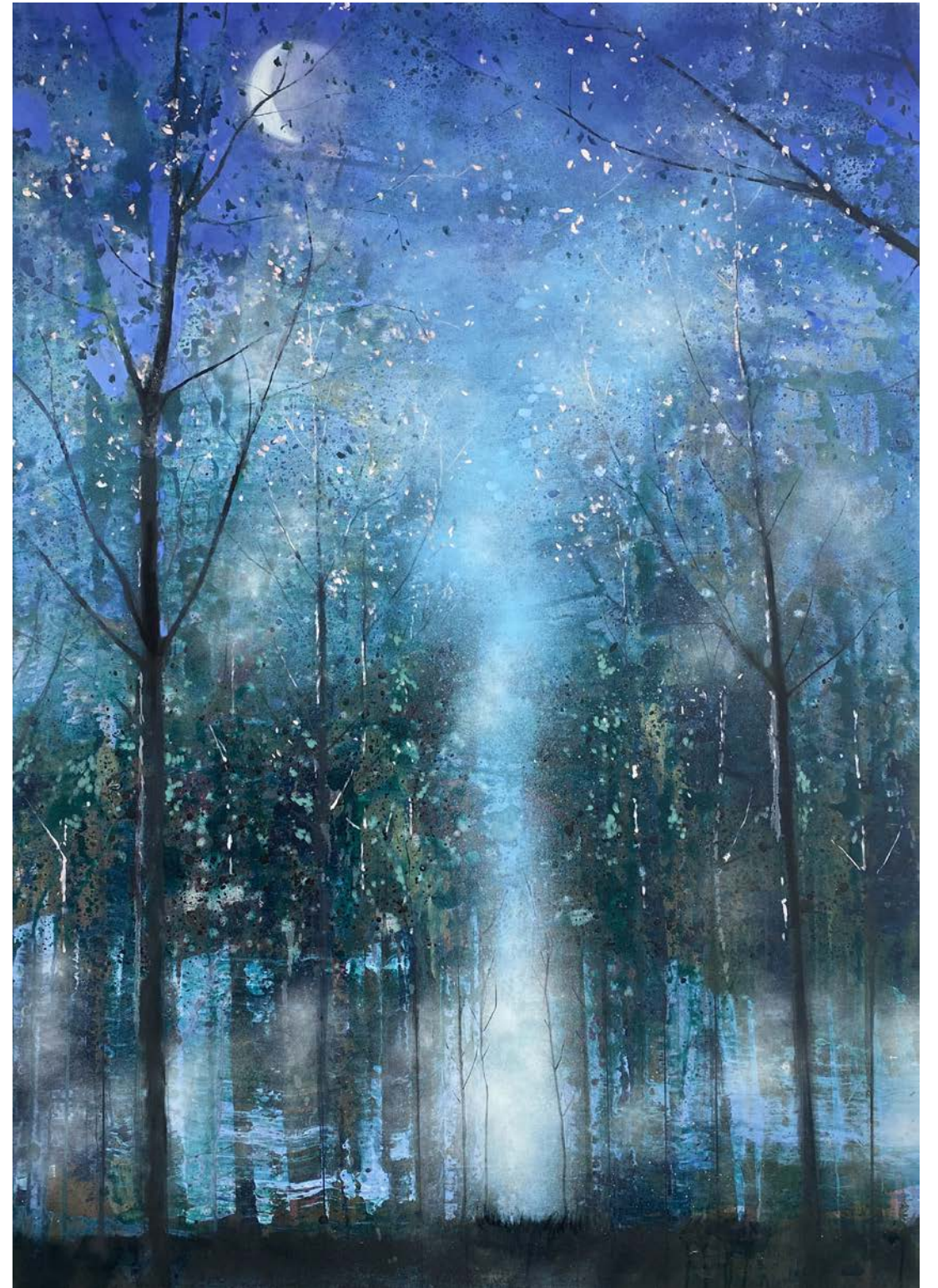


*White Lilies*  
oil on black sand cloth 140 × 120 cm





*Moon Forest*  
oil on canvas 120 × 85 cm





*The Search*  
oil and spray paint on canvas  
180 × 150 cm







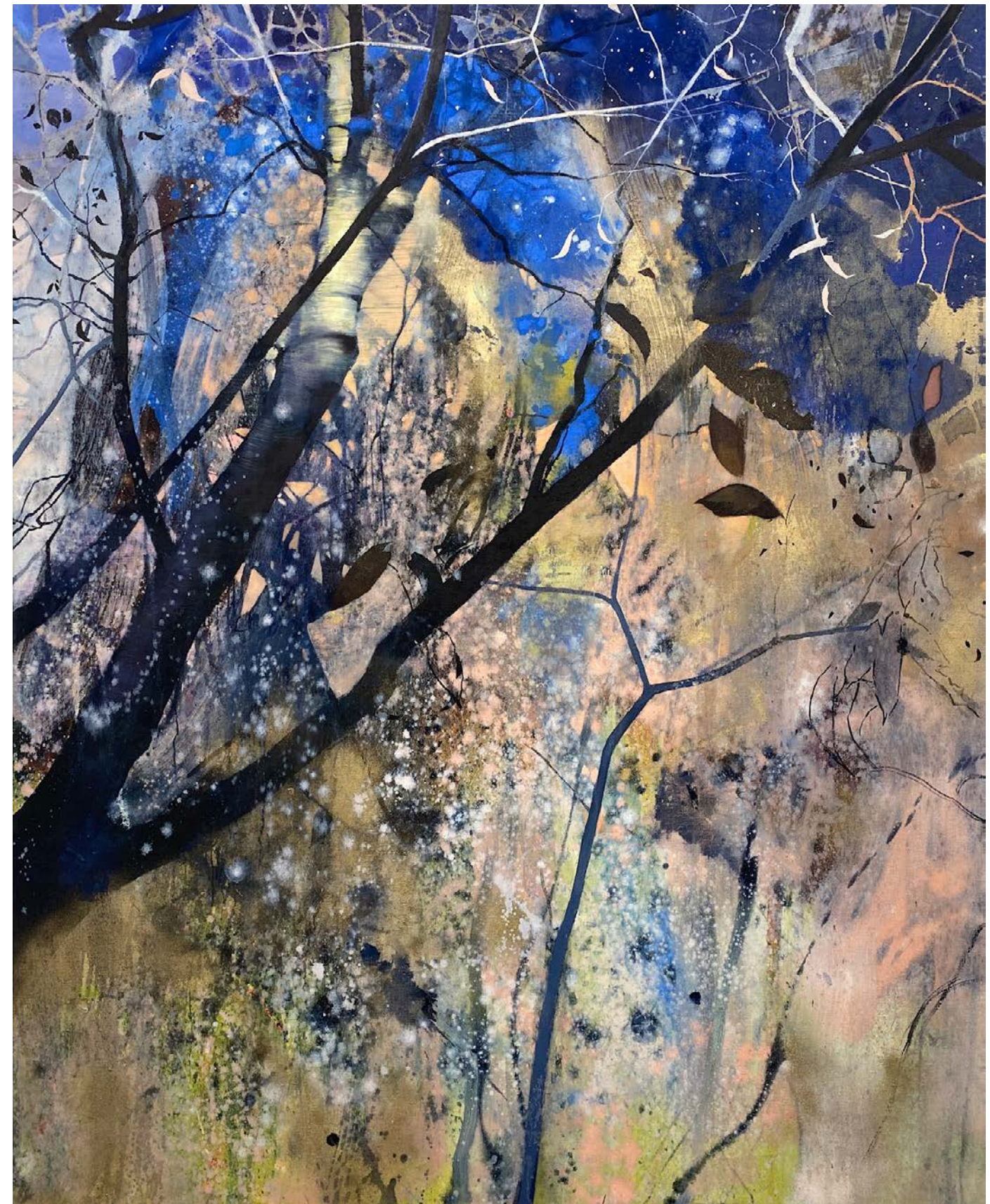
*Tentative*  
oil on copper 13 × 18 cm



*Haze*  
oil on copper 18 × 13 cm

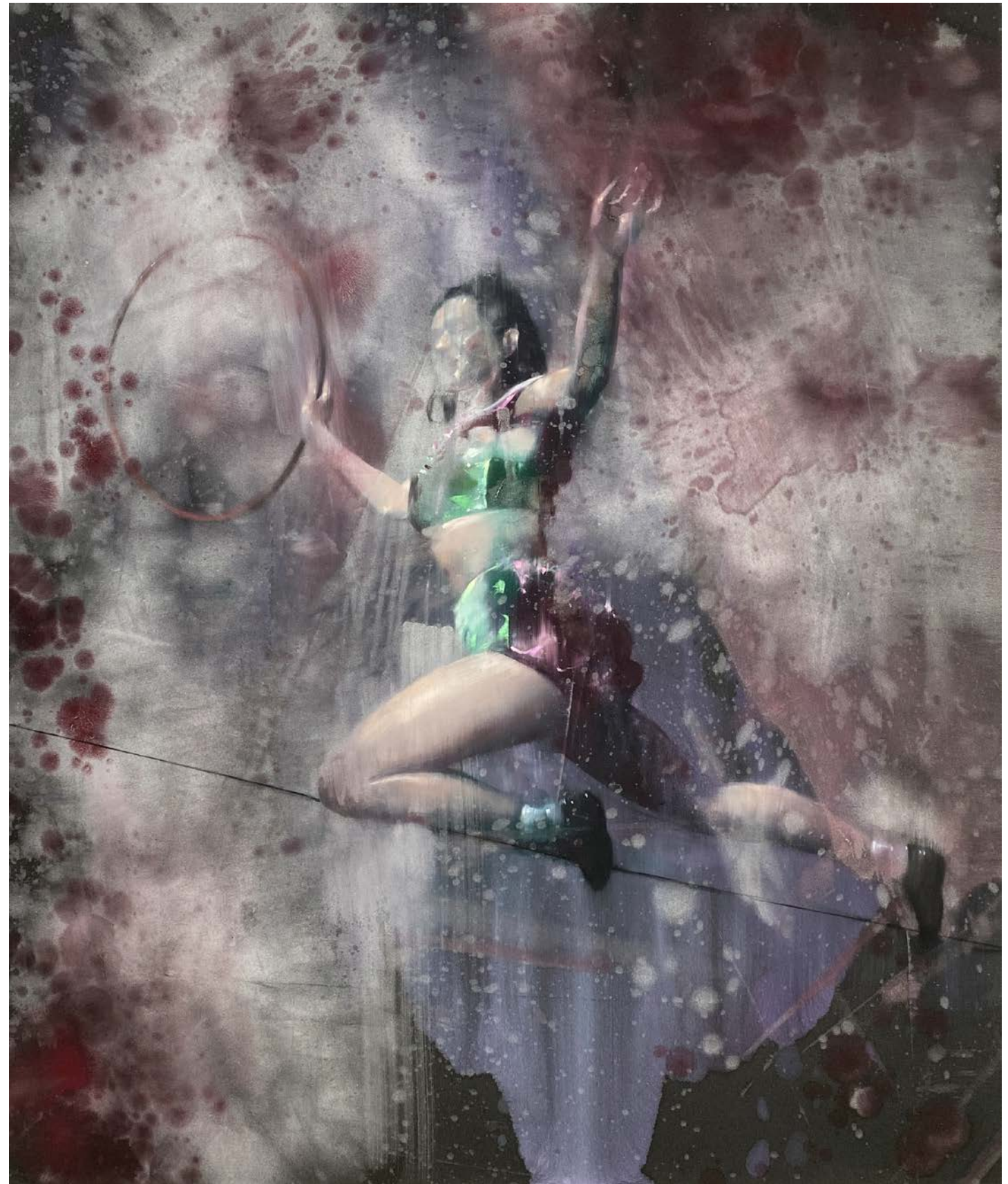


*Towards Sky*  
oil and spray paint on linen 160 × 130 cm





*Tightrope*  
oil on black sand paper 140 × 120 cm







*The Plentiful Forest*  
oil on canvas 150 × 180 cm





*Sail*  
oil and spray paint on canvas 80 × 65 cm



*The Ride Home*  
oil on canvas 80 × 65 cm





*Race for the Shadows*  
oil on canvas 200 × 230 cm



**Biography**

Born in 1963, lives and works in East Sussex, UK

**Education and Qualifications**

1996-99 Royal Academy Schools, Postgraduate Diploma in painting

1982-85 Leeds Polytechnic BA (Hons)

1981-82 Mid-Cheshire College Art Foundation Studies

**Selected Solo Exhibitions**

2021 – ‘Dereliction’ Christine Park Gallery, Shanghai, China

2020 - *Twin Peaks*, Private and Public, Jersey, UK

2019 - *Beautiful Abandonment*, Long & Ryle, London, UK

2019 - *Nick Archer solo booth*, UNTITLED Art Fair, with Christine Park Gallery,

The Palace of Fine Arts, San Francisco, USA

2017 - *The Journey*, Long & Ryle, London, UK

2016 - *Last light paintings by Nick Archer*, 10 Gresham Street, London, UK

2014 - *Lost in Paradise*, Long & Ryle, London, UK

2013 - *Dystopie*, Galerie Hug, Paris, FR

2013 - *Sixty Threadneedle street*, in association with Long and Ryle, London, UK

2013 - *MCL*, France in association with Louise Alexander Gallery, Metz, FR

2009 - Sarah Myerscough Fine Art, London W1, UK

2008 - Hastings Museum and Art Gallery, UK

2005 - Sarah Myerscough Fine Art, London W1, UK

2005 - Royal Overseas League, London and Edinburgh, UK

2004 - Beaux-Arts, Bath, UK

2002 - Sarah Myerscough Fine Art, London W1, UK

2000 - Dean Clough Gallery, Halifax, UK

**Duo exhibitions**

2019 - *Nick Archer & Xyza Cruz Bacani*, ART FAIR TOKYO 2019, with Christine Park Gallery, JPN

2017 - *Beyond the Sublime*, *Nick Archer and Jenny Pockley*, Gowen Contemporary, Geneva, CH

2014 - *Meurtrière Bleue* - *Nick Archer and Yifat Bezalel*, Gowen Contemporary, Geneva, CH

**Selected Group Exhibitions**

2021 – Westbund Art Fair, Shanghai, China with Christine Park Gallery

2020 - Dallas Art Fair (online), with Christine Park Gallery

2020 - London original Pint fair, Royal Academy London (online), with Long and Ryle

2019 -*Nick Archer. Solo Show*, Art Aspen 2019 with Christine Park Gallery New York, USA

2019 - Fair for Saatchi Art Fair, with Long & Ryle, Saatchi Gallery, London, UK

2019 - Dallas Art Fair with Christine Park Gallery, Fashion Industry Gallery, Dallas, USA

2018 - *Pockley/Archer/Overlap. Verge*, Long & Ryle, London, UK

2018 - Lynn Painter-Stainers Prize 2018, Mall Galleries, London, UK

2018 - London Art Fair 2018, with Long & Ryle Gallery, London, UK

2017 - *Time Memory and Landscape*, Long & Ryle Gallery, London, UK

2016 - Olympia International Art & Antiques Fair, Olympia, London, UK

2016 - ART16, London's Global Art Fair, Olympia, London, UK

2016 - The London Original Print Fair, Royal Academy of Arts, London, UK

2015 - The London Original Print Fair, Royal Academy of Arts, London, UK

2015 - The London Art Fair, Business Design Centre, London, UK

2014 - LAPADA Art and Antiques Fair, Berkeley Square, London, UK

2014 - ART14, London’s Global Art Fair, Olympia, London, UK

2014 - *6 Contemporary painters*, Hastings Museum, East Sussex, UK

2014 - Works on show with Long and Ryle contemporary, London, UK

2014 - Art Paris, Grand Palais, Paris, Arts festival Porto Cervo, Italy with Louise Alexander Gallery, FR

2013 - Art Paris, Grand Palais, Paris, Arts festival Porto Cervo, Italy with Louise Alexander Gallery, FR

2012 - Art Paris, Grand Palais, Paris, Arts festival Porto Cervo, Italy with Louise Alexander Gallery, FR

2012 - CEAF Wandsworth Museum, London, UK

2012 - *Meltwater*, Eagle Gallery, London, UK

2011 - Art Paris, Grand Palais, Paris, Arts festival Porto Cervo, Italy with Louise Alexander Gallery, FR

2011 - Art in Romney Marsh, Installation in Ivychurch, UK

2010 - Art Paris, Grand Palais, Paris, Arts festival Porto Cervo, Italy with Louise Alexander Gallery, FR

2009 - Threadneedle art Prize, Mall Galleries, London, UK

2008 - *Lynn painter-stainers prize*, Painters’ Hall, London, UK

2008 - *Community in contemporary art*, Clifford Chance gallery, Canary Wharf, London, UK

2006 - *Contemporary British Art*, Chelsea Art Gallery, San Francisco, US

2006 - *Arts project space*, London Contemporary Art Fair, UK

2005 - *Sea Voices*, Hastings Museum and Art Gallery, East Sussex, UK

2004 - *Arts Futures Exhibition*, Contemporary Art Society, London, UK

2004 - *BP Portrait Award*, National Portrait Gallery, London, UK

2004 - Royal Academy Summer Exhibition, London, UK

2004 - Royal Academy Summer Exhibition, London, UK

2003 - Jerwood Drawing Prize, Jerwood space, London, UK

2003 - Cast Iron Gallery, New York, US

2002 - BP Portrait Award, National Portrait Gallery, London, UK

2002 - Hunting Art Prizes, RCA London, UK

2001 - Hunting Art Prizes, RCA London, UK

2000 - Sarah Myerscough Fine Art, Whitechapel Art Gallery, London, UK

1999 - BP Portrait Award, National Portrait Gallery, London, UK

1999 - Hunting Art Prizes, RCA London, UK

1999 - The Discerning Eye, Mall Galleries, London, UK

1998 - BP Portrait Award, National Portrait Gallery, London, UK

1998 - The Discerning Eye, Mall Galleries, London, UK

1998 - Singer & Friedlander Sunday Times Watercolour Competition

1998 - Premiums Exhibition, Sackler Galleries, RA, London, UK

1997 - Premiums Exhibition, Sackler Galleries, RA, London, UK

1997 - Royal Academy Summer Exhibition, London, UK

1994 - Whitechapel Open, Whitechapel Art Gallery, London, UK

1993 - Hunting Art Prizes, RCA London, UK

1990 - Hunting Art Prizes, RCA London, UK

**Career History**

2013 - part time art tutor, studio school, Rye, East Sussex

2005 - Guest speaker on contemporary portraiture, National portrait gallery

2001 - 2013 Part-time Lecturer- Heatherley School of Art, Chelsea, London

1999 - 2000 Artist in Residence, London Business School, London

1999 - Visiting Lecturer- Loughborough University, Winchester School of Art & John Moores `University, Liverpool

1997-98 - President of Students Union, RA Schools

1994 & 1986 - Leeds Metropolitan University, Visiting Lecturer, printmaking

1991 - Florence Trust, London- 10 Month Residency

1990 - Cyprus College of Art

1987 - St Pauls Gallery, Leeds- Artist in Residence



**Awards, Publications & commissions**

2018 - Lynn Painter-Stainers Prize 2018 (nominated)  
2012 - Commissioned by the Historic Royal Palaces, Tower Bridge, London  
2008 - Winner of ING Fresh Eyes competition  
2006 - Commissioned portraits for the Royal family of Kuwait  
2002 - 1st Prize, Hunting Art Prizes  
2000 - Commissioned by 'The Mill' film production company  
1999 - *Cyril Sweett Award*, Worshipful Company of Painter Stainers, for the most outstanding Post-graduate degree show of 1999  
1999 - Haite Travel Scholarship  
1999 - *London Prize*, Hunting Art Prizes  
1998 - *Commended*, BP Portrait Award, National Portrait Gallery, London  
1998 - Discerning Eye Award for figure painting  
1998 - Elizabeth Scott-Moore Watercolour Prize, RWS  
1998 - Richard Jack And George Isted Prizes for portraiture, Premiums Exhibition, Sackler Galleries, RA, London

**Selected Public and Corporate Collections**

Stormont collection, East Sussex  
The future satellite of the Hermitage Museum, Moscow  
*Peoples Portraits* Girton college, Cambridge  
*The Mill* Film production company, London  
London Business School  
*The Hurlingham* sports club, London  
Smith and Williamson Bank, London  
El –Sabah family collection, Kuwait  
Historic Royal Palaces, Tower of London  
Royal Overseas League, St James's, London

**Bibliography**

2017 - Nicholas Usherwood, galleries magazine 2017  
2017 - jackdaw magazine 'Time memory and landscape'  
2016 - Fresh paint magazine interview  
2009 - Melanie Abrams, Galleries Magazine, June 2009  
2003 - John Holden, Galleries Magazine, April 2003  
2003 - Sue Hubbard, *Forever England*, Independent, 8 April  
2003 - Martin Gayford Catalogue introduction April 2003  
2000 - Jay Merrick, *Reflections in a darkling eye*, The Independent, 14 March  
1999 - Martin Gayford, *Freudian tendency*, Daily Telegraph, 30 June  
1999 - Morgan Falconer, *Archer quietly hits the bullseye-yet again*, Highbury and Islington Express  
1998 - William Packer, *Changing face of contest*, Financial Times, 7 July  
1998 - Martin Gayford, *Choose from lively, quirky or accomplished*, Daily Telegraph, 22 July  
1998 - Martin Gayford, *Painting in the rain*, Daily Telegraph, 30 September

*Green Forest II*  
oil on canvas 100 × 120 cm





LONG & RYLE